

Tallan Barrow-Traylor

ESS 221: SUPER

Communication Piece

April 24, 2023

### We are Scientist

Positivism and constructivism, two epistemological views that exist in contrast to one another. Where the traditional scientific method invites a positivist approach that re-enforces the idea that there is one singular way of knowing and understanding. A constructivist viewpoint establishes the idea that we ourselves develop knowledge and understanding through our own experiences, as well as the experiences of others, integrating the context of social and cultural components.

Positionality Statement: I believe that it is critical for me to establish my positionality within my work, as it has carried influence in my approach to this research. I am a 22-year-old, black, cis male, who attends Colorado State University as an undergraduate. I come from a lower middle-class family of 5, living a half step below suburban lifestyle, but a half step above the 'urban'/centralized metro lifestyle. I approach this research through a feminist and constructivist lens, understanding that there are more ways of knowing than we see present in today's science. For this, and many other reasons I am, and will continue to be, an advocate for marginalized BIPOC communities. As there is an abundance of untouched knowledge that resides within them.

We utilized a constructivist approach to take on this research project, as it allowed me and my research group the opportunity to maintain a more effective and well-established collaborative coding process. We all come from different backgrounds and felt that it was important to be as vulnerable with the data we were analyzing as our positionalities would allow us to be. It made our thematic coding breakdown more precise, organized, and accurate.



Figure 1: This image represents a clearer definition of the positivist epistemology. Giving validity and objectivity to research, that is based in precise methods with statistical and objective data to support it. (Study, 2013)

## Constructivism

Learners construct knowledge rather than  
just passively take in information

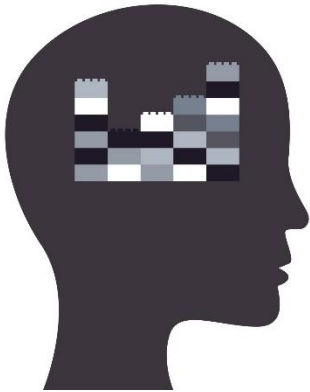


Figure 2: This image helps define the constructivist epistemology. Highlighting the idea that knowledge is constructed through human activity, we as individuals create meaning through our interactions. (Simply Psych, 2023)

I chose to write a palindrome styled poem titled 'We are scientists' that captures both epistemologies' viewpoints. Positivist Approach (Top down), Constructivist Approach (Bottom up)...

We are scientists

Designed to explore all

We are scientists

We seek knowledge and understanding, after all

Knowing is binary

Enough with the narrative, that

Meaning comes from our realities

There is a demand for knowledge and truth

Searching for ultimate proof, when

We live in a world of constant flux, no more

Should we live in the process of discovery and relief

No fixed truths, no set beliefs

We are scientists

Is this the solution?

(Now read bottom up)

Tallan Barrow-Traylor