

B.S. Forest and Rangeland Stewardship

Forest Fire Science Concentration

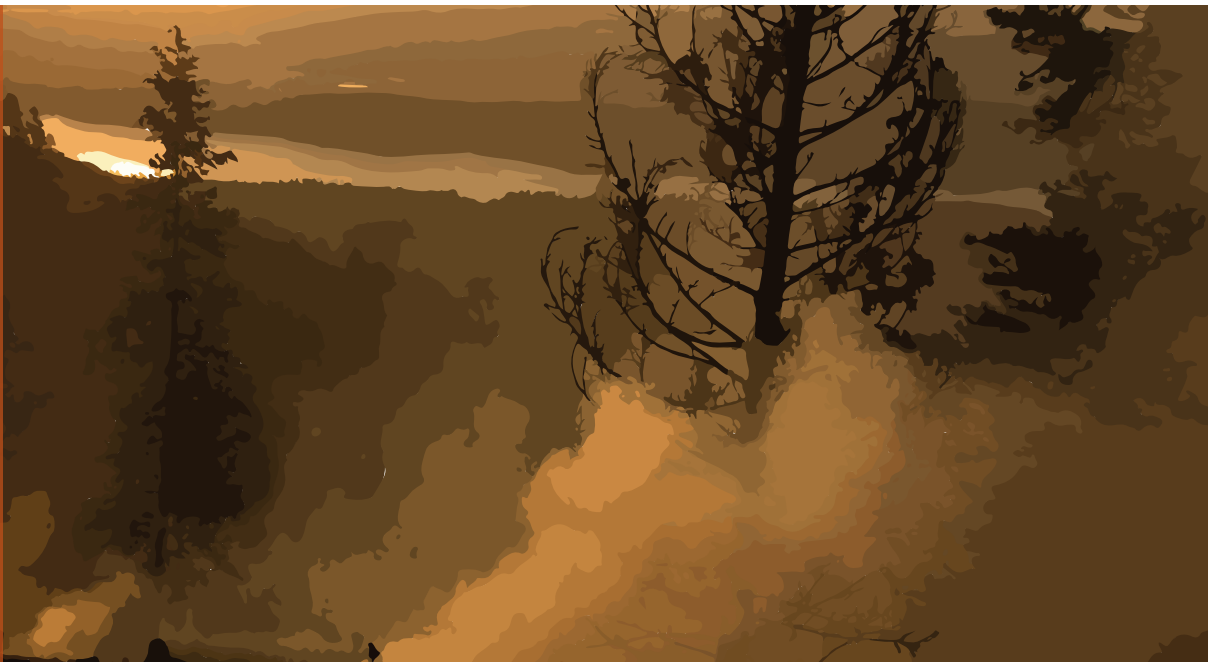
Fight Fire with Fire

Degree Checklist

Accredited by the
Society of American
Foresters

Certified by the
Association for Fire
Ecology

*Gain understanding about
the natural benefits of fire
and its use as a forest
management tool.*



FOREST AND RANGELAND
STEWARDSHIP
COLORADO STATE UNIVERSITY

A part of Warner College of Natural Resources

Major in Forest and Rangeland Stewardship Forest Fire Science Concentration

FRESHMAN YEAR

Course	Semester	Prerequisites	Credits	AUCC Category	
— F 101	Intro. to Forest and Rangeland Stewardship	F	---	1	---
— NR 193	First Semester Seminar	F, S	Required for all first semester CSU students in FRS	1	---
— BZ 120	Principles of Plant Biology	F, S	---	4	3A
— CHEM 107	Fundamentals of Chemistry	F, S, SS	MATH 117 + or concurrent enrollment in MATH 118 +	4	3A
— CHEM 108	Fundamentals of Chemistry Lab	F, S, SS	CHEM 107 or concurrent enrollment	1	3A
— CO 150	College Composition	F, S, SS	test or scores, or CO 130	3	1A
— PH 110	Descriptive Physics	F, S	---	3	3A
— MATH 141	Calculus in Management Sciences ¹	F, S, SS	MATH 118 or test	3	1B
— SPCM 200	Public Speaking	F, S, SS	---	3	---
—	Arts & Humanities			3 + 3	3B
—	Diversity, Equity, and Inclusion			3	1C

¹ Students considering graduate study in Forest Fire Science should substitute MATH 155 - 255 or MATH 160-161 (with appropriate prerequisites) for MATH 141.

SOPHOMORE YEAR

—	ATS 350	Introduction to Weather and Climate	F	---	2	---
—	F 209	Intro to Forest and Rangeland Ecology	F	Three credits of BZ or LIFE and MATH 118 or higher	3	---
—	STAT 301	Introduction to Statistical Methods	F, S, SS	MATH 117 or higher	3	---
—	SOCR 240	Introductory Soil Science	F, S	CHEM 107 or higher	4	---
—	ECON 202	Principles of Microeconomics	F, S, SS	MATH 117 or higher	3	3C
—	F 310	Forest and Rangeland Ecogeography	F, S	BZ 120 or any intro. biology	3	---
—	F 312	Dendrology Lab	F, S	BZ 120	2	---
—	RS 300	Rangeland Stewardship and Conservation	F	BZ 120 or LIFE 102	3	---
—		Historical Perspectives			3	3D

SUMMER FIELD COURSES [CSU Mountain Campus]

—	NR 220	Natural Resource Ecology and Measurements	SS	BZ 110 and 111; or BZ 120 or LIFE 103 MATH 118 or MATH 141 or higher	5	---
—	F 230	Forestry Field Measurements	SS	---	2	---

JUNIOR YEAR

—	BSPM 365	Integrated Tree Health Management	F	BZ 120 or equivalent	4	---
—	CO 300	Writing Arguments	F, S, SS	CO 150 or HONR 193	3	2
—	F 311	Forest Ecology	F, S	F 209 or LIFE 220/320	3	---
—	F 321	Forest Biometry	F	NR 220; F 230; MATH 141; and STAT 201 or 301	3	---
—	F 322	Economics of the Forest Environment	F, S	ECON 202 or equivalent	3	---
—	F 324	Fire Effects and Adaptations	S	F 209 or LIFE 220/320	3	---
—	F 325	Silviculture	S	NR 220	3	---
—	F 330	Timber Harvesting and Environment	S	F 321	1	---
—	F 335	Applications of Silviculture	S	F 325 or concurrent enrollment	1	---
—	NR 319	Geospatial Applications in Natural Resources	F, S	Junior Standing	4	---
—	NR 320	Natural Resources History and Policy	F, S	Junior Standing	3	---

SENIOR YEAR

—	F 421	Ecological Forest Management	F	F 311, 321, 325, and 335	3	4A, C
—	F 422	Quantitative Methods in Forest Management	F	F 321 and 322	3	---
—	F 326	Wildland Fire Behavior and Management	F	F 209 or LIFE 220/320	3	---
—	F 425	Advanced Wildland Fire Management	S	F 326 and NR 319	3	---
—	NR 425	Natural Resource Policy and Sustainability	S	NR 320	3	4B
—	NR 444	Fire Economics and Policy	F	ECON 202 or equivalent	3	---
—	WR 204	Sustainable Watersheds	F, S	---	3	3A
—		Electives ²			3	

(+) = or higher F = Fall S = Spring SS = Summer Session

² Select enough elective credits to bring the program total to a minimum of 120 credits, of which at least 42 must be upper-division (300- to 400-level).

Degree Requirements: 120 credits (42 credits at 300-400 level); 2.0 GPA

Students are responsible for knowing and meeting requirements in the University catalog (AUCC courses).

*Verify all information on this form regularly as course information can change frequently.

