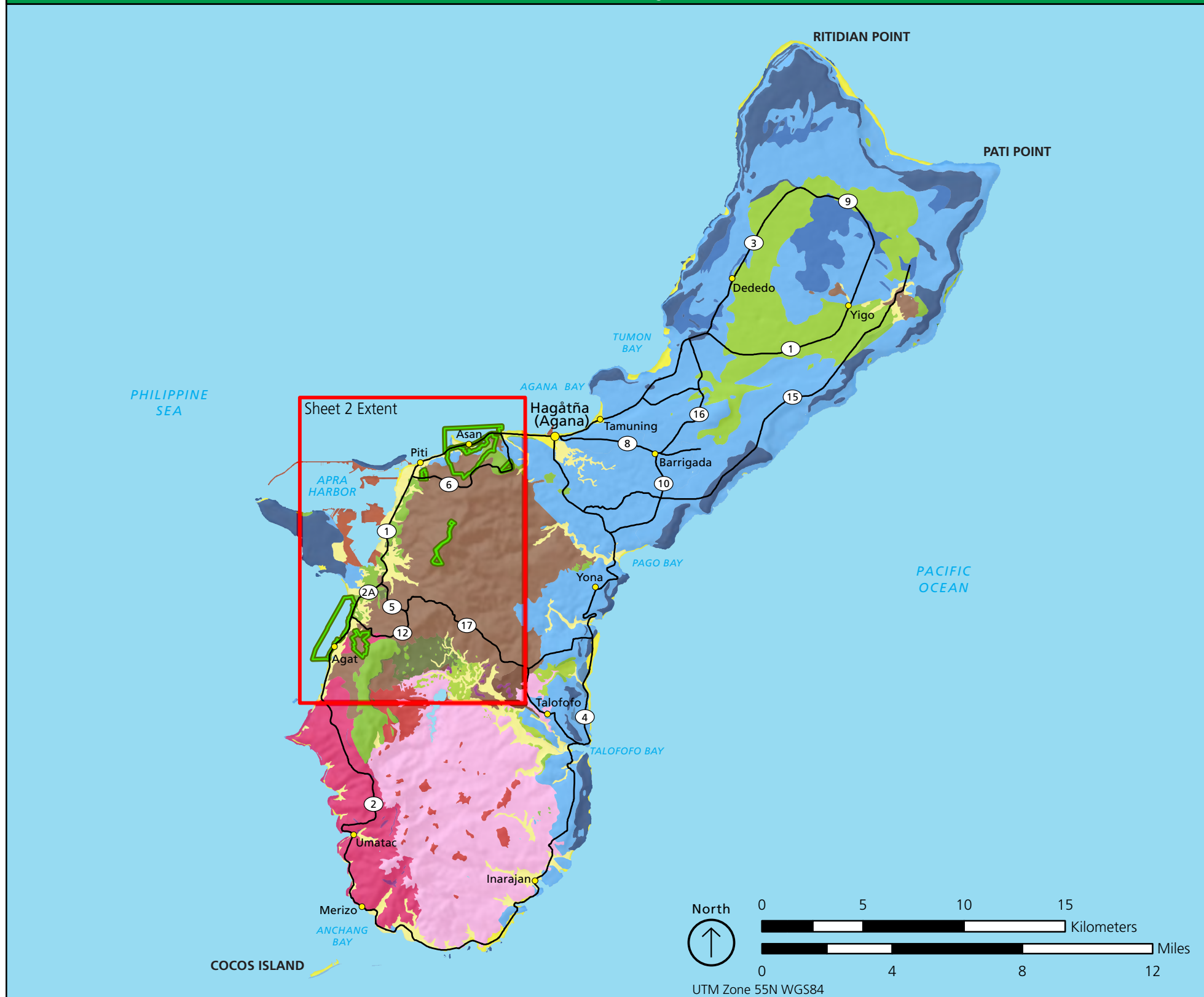




Overview of Digital Geologic Data for War in the Pacific NHP

Sheet 1: Full Extent of Digital Data



NPS Boundary		Geologic Units	
	NPS Boundary		Qaf - Artificial fill
Folds			Qrb - Beach deposits
	anticline, known or certain, arrow indicates direction of plunge		Qrm - Merizo Limestone
	syncline, known or certain, arrow indicates direction of plunge		Qal - Alluvium
Faults			QTmr - Mariana Limestone, reef facies
	unknown offset/displacement, known or certain D indicates downthrown side		QTmd - Mariana Limestone, detrital facies
	unknown offset/displacement, approximate		QTmm - Mariana Limestone, molluscan facies
	unknown offset/displacement, concealed		QTmf - Mariana Limestone, fore-reef facies
	unknown offset/displacement, queried		QTma - Mariana Limestone, Agana Argillaceous Member
	unknown offset/displacement, approximate and queried		Tal - Alifan Limestone
	unknown offset/displacement, concealed and queried		Tt - Alifan Limestone, Talisay Member
	right-lateral fault, vertical displacement/offset unknown, approximate		Tj - Janum Formation
Geologic Contacts			Tbl - Barrigada Limestone
	known or certain		Tb - Bonya Limestone
	approximate		Tud - Umatac Formation, Dandan Flow Member
	map boundary		Tub - Umatac Formation, Bolanos Pyroclastic Member
	water or shoreline		Tum - Umatac Formation, Maamong Limestone Member
	water or shoreline, approximate		Tuf - Umatac Formation, Facpi Volcanic Member
			Tam - Alutom Formation, Mahlac Member
			Ta - Alutom Formation

This figure is an overview of compiled digital geologic data. It is not a substitute for site-specific investigations.

Minor inaccuracies may exist regarding the location of geologic features relative to other geologic or geographic features on the figure. Based on the source map scale (1:50,000) and U.S. National Map Accuracy Standards, geologic features represented here are within 25 meters / 83 feet (horizontally) of their true location.

This figure was prepared as part of the NPS Geologic Resources Division's Geologic Resources Inventory. The source maps used in creation of the digital geologic data product were:

Tracey, J.I., Schlanger, S.O., Stark, J.T., Doan, D.B., and May, H.G. 1964. Geologic Map and Sections of Guam, Mariana Islands (plate 1/3) (scale 1:50,000) In General Geology of Guam, Professional Paper 403-A, plate 1/3, U.S. Geological Survey.

Tracey, J.I., Schlanger, S.O., Stark, J.T., Doan, D.B., and May, H.G., 1964, Sample Locality Map of Guam, Mariana Islands (plate 2/3) (scale 1:50,000) In General Geology of Guam, Professional Paper 403-A, plate 2/3, U.S. Geological Survey.

Digital geologic data and cross sections for War in the Pacific National Historical Park, and all other digital geologic data prepared as part of the Geologic Resources Inventory, are available online at the NPS Natural Resource Information Portal:
<https://nriinfo.nps.gov/Reference.mvc/Search>. (Enter "GRI" as the search text and select War in the Pacific National Historical Park from the unit list.)